

Pelco Fire Detection

Protecting people and property



PELCO

by Schneider Electric



Pelco Fire Detection

The early detection of an outbreak of fire is of key importance to all building owners and operators. Fire detectors can detect a fire and initiate action before human sense it.

The basis for protecting people and property

Fire protection is paramount to the safety of life and property and is not, unfortunately, a thing to which people pay sufficient attention. Insurance companies consider fires to be the highest threat to business continuity. Fires always pose a huge risk to property, not to mention life and limb. Fires cause business interruptions and can destroy the future of an enterprise.

The Pelco Fire Detection System is a reliable tool against business interruptions due to fire. Fire detectors ensure round-the-clock protection seven days a week and increases personnel safety by backing up fire protection offered by construction methods. The Pelco Fire Detection System is easy to use. The user interface offers clear instructions according to the situation.

The Pelco Fire Detection System can interface with and control the operation of fire retardation and information systems. The system supplied by Pelco can be easily installed in accordance with the fire safety needs of buildings and customers alike. The Pelco Partner Network is never far away, and provides local maintenance and help with the refurbishment of out-of-date systems.



A range of solutions for the protection of buildings and interior spaces

The choice of a fire detector is determined by the level of protection desired, the use and purpose of the area covered, insurance company recommendations, the regulations imposed by fire and rescue officials, and the individual needs of the proprietor. The Pelco range of detectors are suitable for the protection of buildings and areas, whatever their configuration.

The Pelco Fire Detection system can be used independently or as part of an integrated security system in which fire detection, intruder detection, access control, and video monitoring are combined in a single system, thereby improving in a cost-effective way the fire safety and premises security when compared to separate systems.



Hospitals

Nursing staff in hospitals are responsible for the safety of patients, including those who are disabled. Fire detectors are adapted to suit different hospital areas, and convey specific information about the incident to nursing staff and the fire and rescue service.



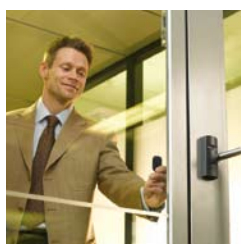
Business premises

Employee and customer safety is crucial. It may also be a statutory requirement. Fire detectors are adapted to suit the various needs of premises, and convey specific directions to personnel and the fire and rescue service.



Access Control

User selected doors can be automatically unlocked when the fire alarm is triggered, allowing the occupants to easily escape and firefighting crews to enter.



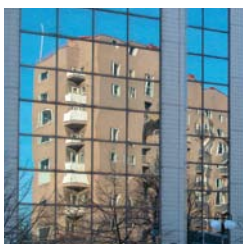
A complete range of fire detectors

Pelco supplies a complete range of fire detectors for everything from individual offices to commercial property, from village shops to shopping centres, from assisted living buildings to central hospitals, from electrical substations to power stations, and from workshops to factories. It is through this that Pelco gained the reputation of being the market leader in Scandinavia for fire detection. Pelco also offers multisensor detector technology, where more than one type of detection method is employed in the same unit. These are highly immune to false alarms allowing for the reliable protection of key interior spaces.



Industry

Reliable fire protection ensures the safety of employees and the continued operation of production lines. Fire detectors are produced for specific needs, even allowing hot work, welding and metalworking operations to continue without causing a false alarm. The use of multisensory detectors allow for the reliable protection of key interior spaces.



Building Management Systems

Through high level integration, the ventilation system can be disabled in the area where the fire breaks out and so reduce available oxygen. Air conditioning and ventilation louvers are closed in order to contain the fire. Smoke extract systems, where fitted can also be controlled.

Decades of experience in the security

Pelco Nordic is the leading expert, manufacturer and developer of fire detection and security systems in Scandinavia. Pelco fire detection systems are developed and manufactured in Finland. The innovative product development team successfully developed the fire detection concept based on customer needs, and now exports to over 20 countries. The Pelco Fire Detection System can be integrated with other third party security systems making easily manageable units that convey real-time data to integrated control centres.

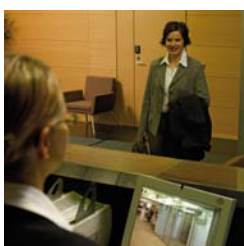


Point and Very High Sensitivity Aspiration Detectors

Aspiration detectors can be used to protect electrical distribution and server areas. Modern day premises are equipped with increasing volumes of electromechanical equipment and a fire that originates in an electrical unit is the biggest and most obvious risk to businesses. Laser sensors used in very high sensitivity units can detect a potential fire hazard long before standard smoke detectors. Thanks to this a potentially damaging situation can be brought under control very early. Wider smoke and fire damage and the evacuation of the building can be avoided.

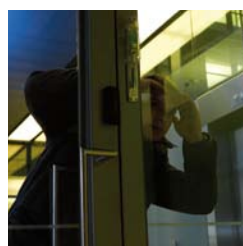
Video Monitoring

A fire alarm can trigger a camera, move it to a pre-set position and a real time image of the incident or outbreak of fire is obtained.



Intrusion Detection

Intrusion Detection can increase fire safety by warning of any intruder who enters the building with arson or robbery as a motivation.



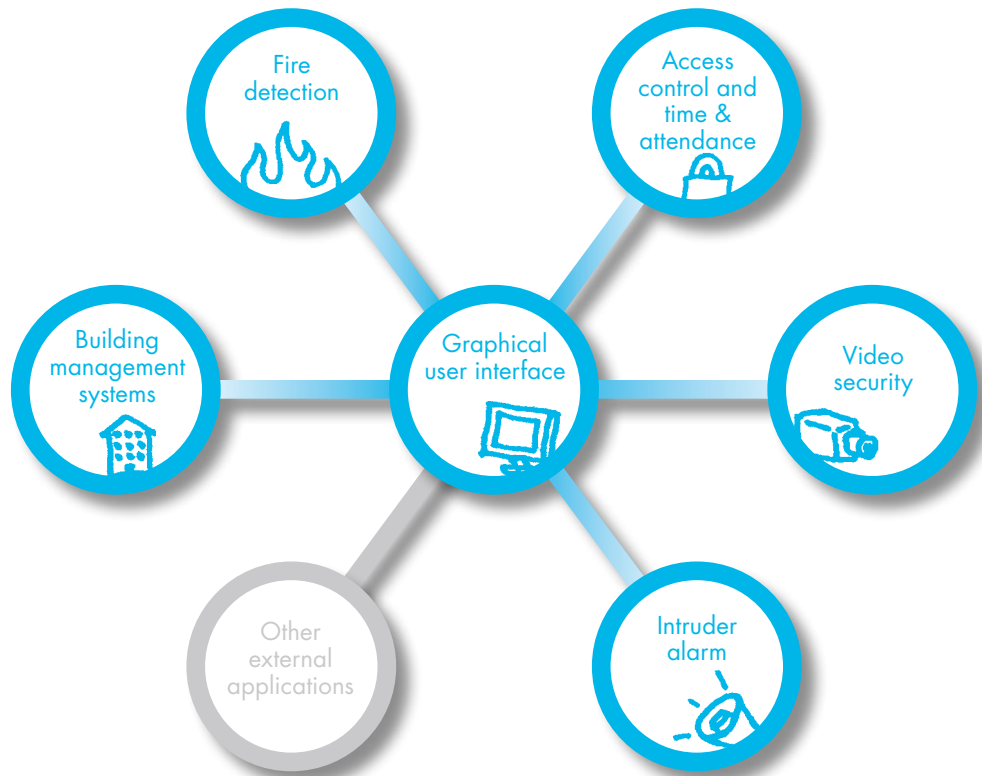
sector are at your disposal

The Esgraf Graphic User Interface

Esgraf is a graphic user interface that combines fire detection, video monitoring, access control and intruder detection alarms. In the event of an incident the location of the alarm immediately appears on the graphic floor plan. Esgraf can also be set up to issue instructions for dealing with the alarm in question.



Pelco system integration increases efficiency



Pelco's independent security systems can be interconnected to provide better efficiency and fire security than with separate systems. Fire detection, video monitoring, intruder alarm and access control can operate independently of each other as individual security systems, but system efficiency performs best when applications are integrated. Pelco integration makes the system easier to manage regardless of location.